

# Building H

27 Hall Street

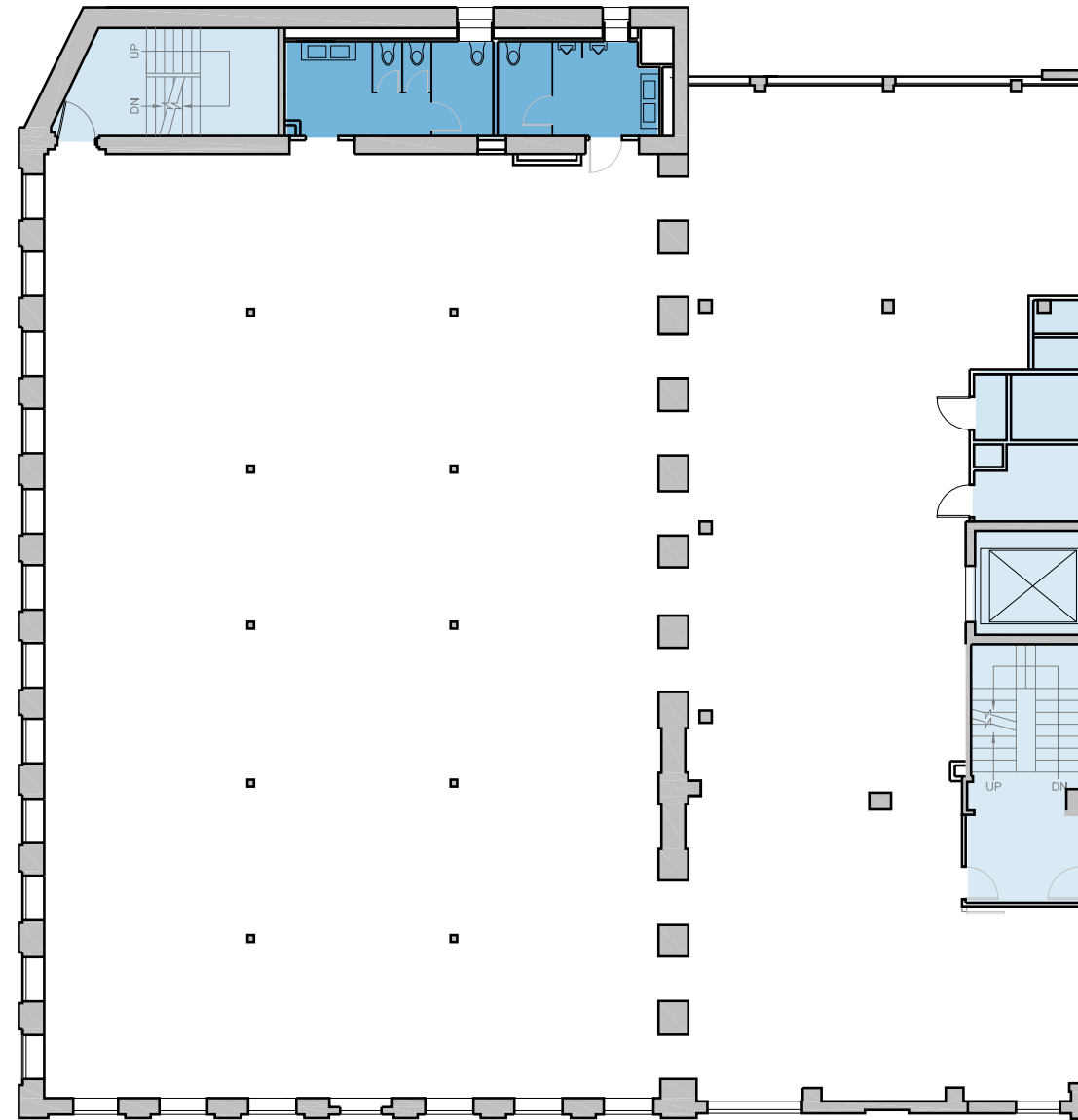
FLOOR	SQUARE FEET	CEILING HEIGHT
5	4,558	12'-1"
4	4,419	11'-6"
3	4,377	10'-10"
2	4,395	11'-5"
1	2,808	12'-3"
B	3,302	12'-5"
<b>TOTAL</b>	<b>23,858</b>	

# Building I

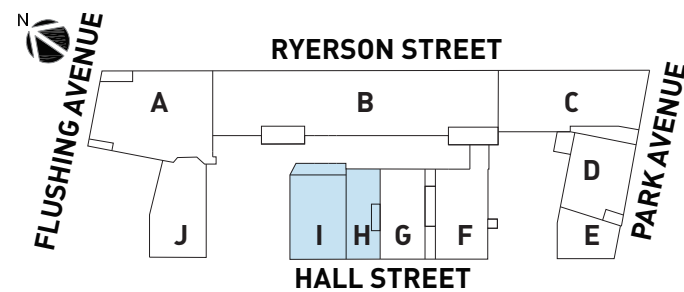
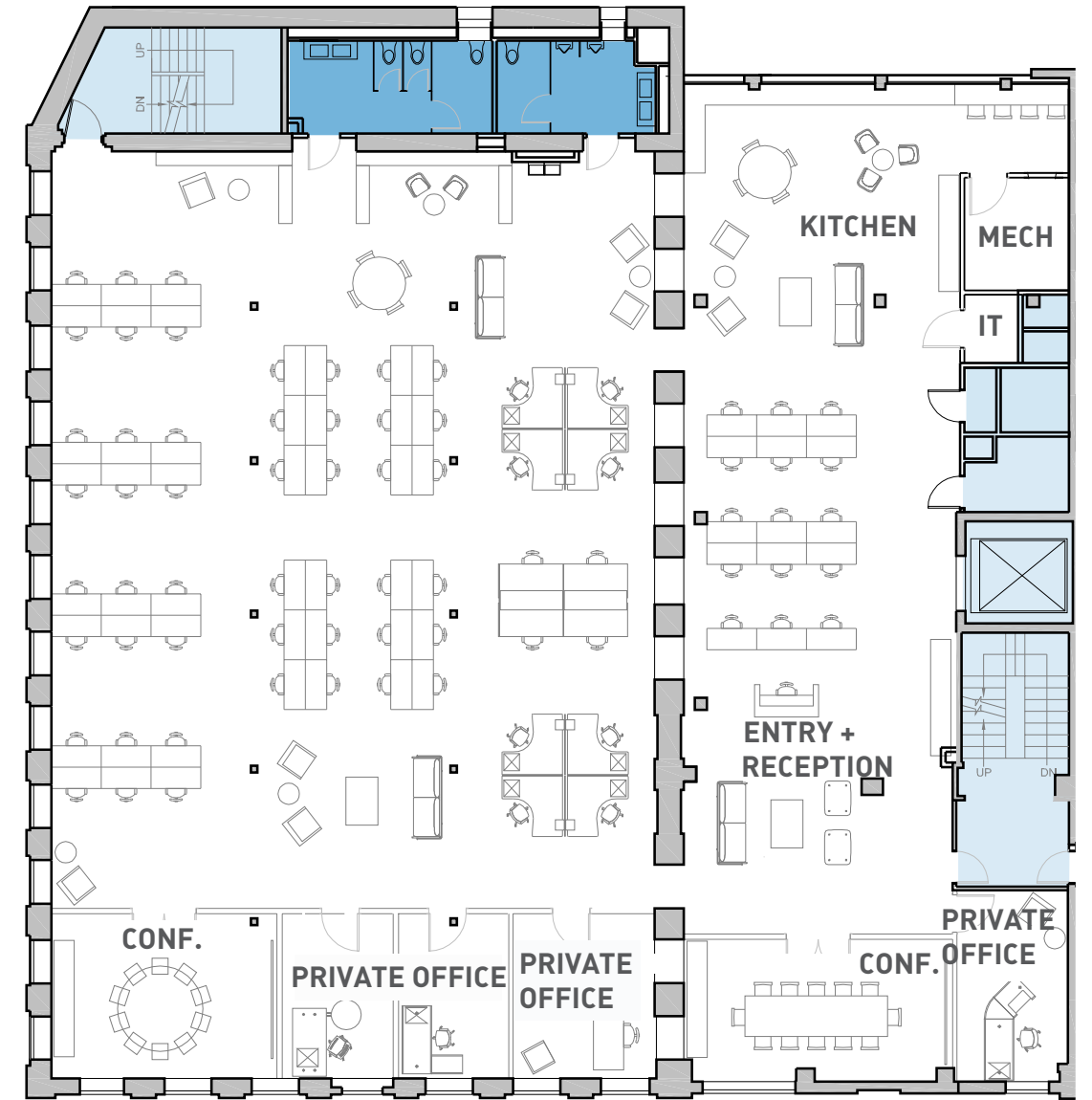
25 Hall Street

FLOOR	SQUARE FEET	CEILING HEIGHT
5	8,066	12'-11"
4	8,077	11'-2"
3	8,066	10'-8"
2	8,066	11'-6"
1	5,883	12'-5"
PLAZA	5,711	12'-3"
<b>TOTAL</b>	<b>43,868</b>	

## Base Floorplan



## Sample Test Fit - 84 Desks



6 WC Fixtures / 6 Lavatories  
Provided with Base Delivery