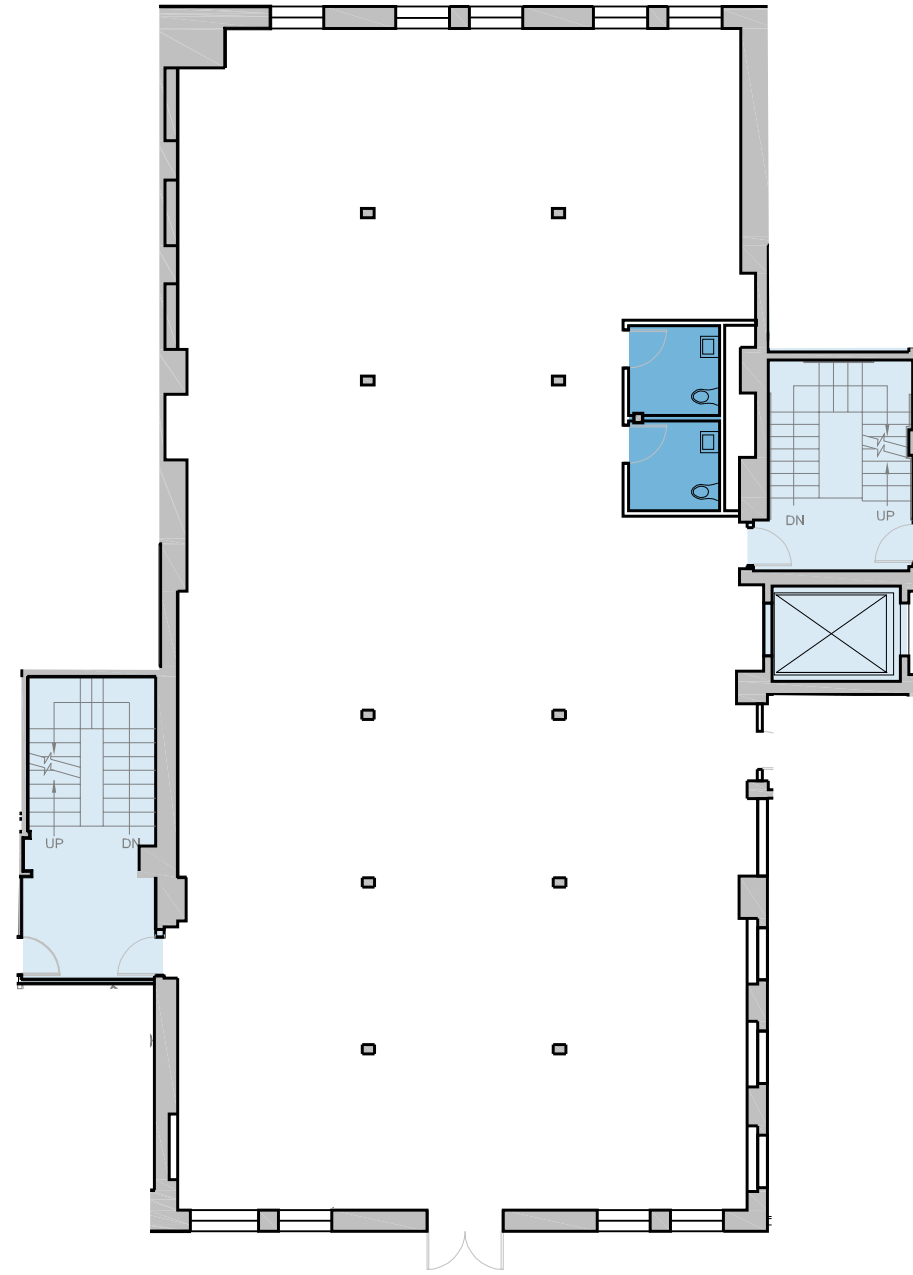


Building G

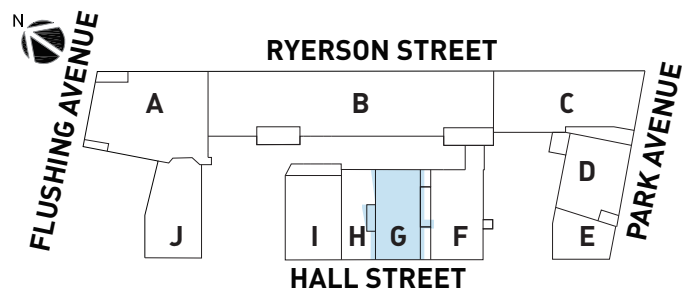
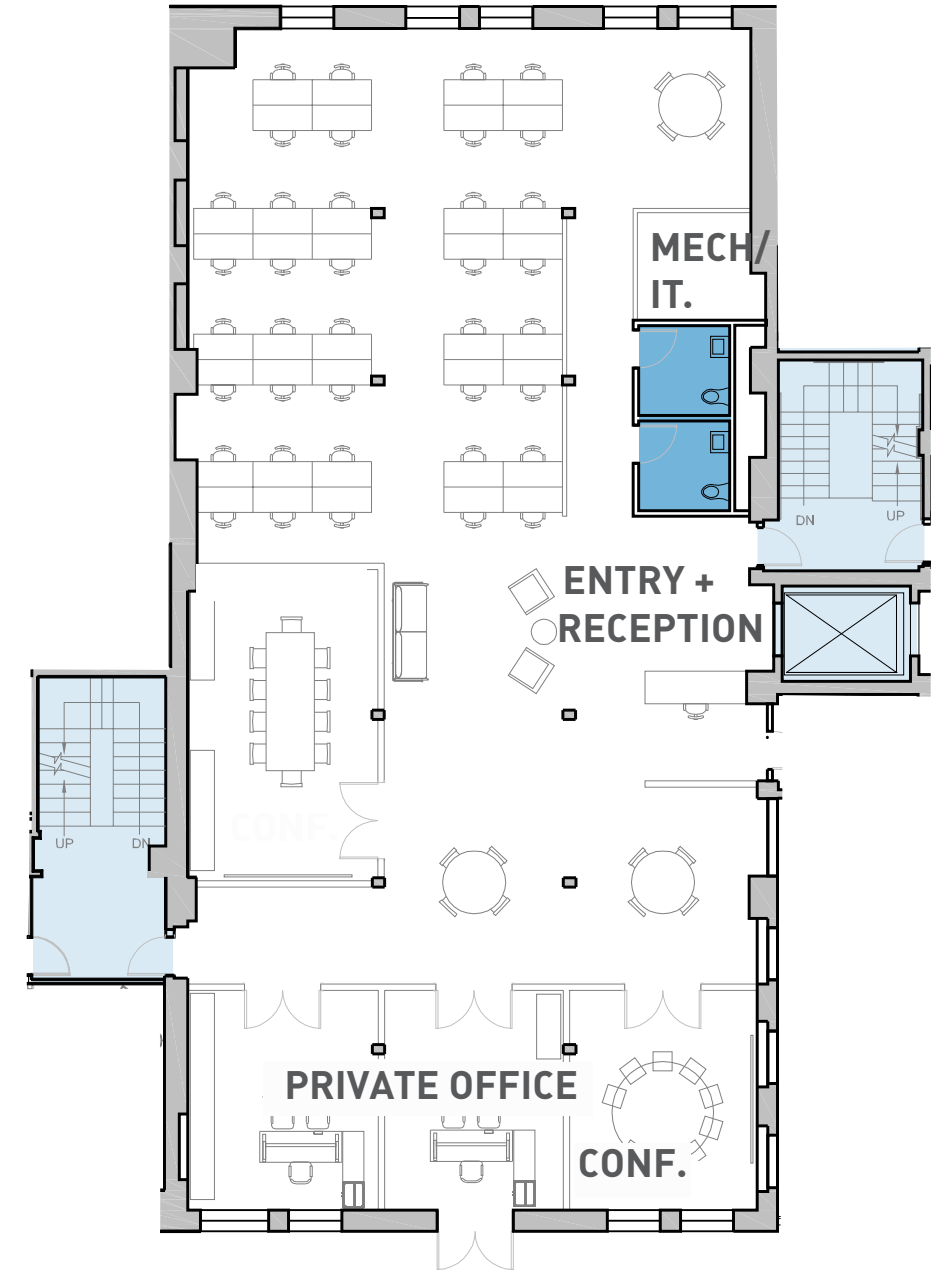
33 Hall Street

FLOOR	SQUARE FEET	CEILING HEIGHT
3	6,258	12'-9"
2	6,252	12'-9"
1	4,569	13'-0"
B	3,384	13'-3"
TOTAL	20,463	

Base Floorplan



Sample Test Fit - 41 Desks



6 WC Fixtures / 6 Lavatories
Provided with Base Delivery