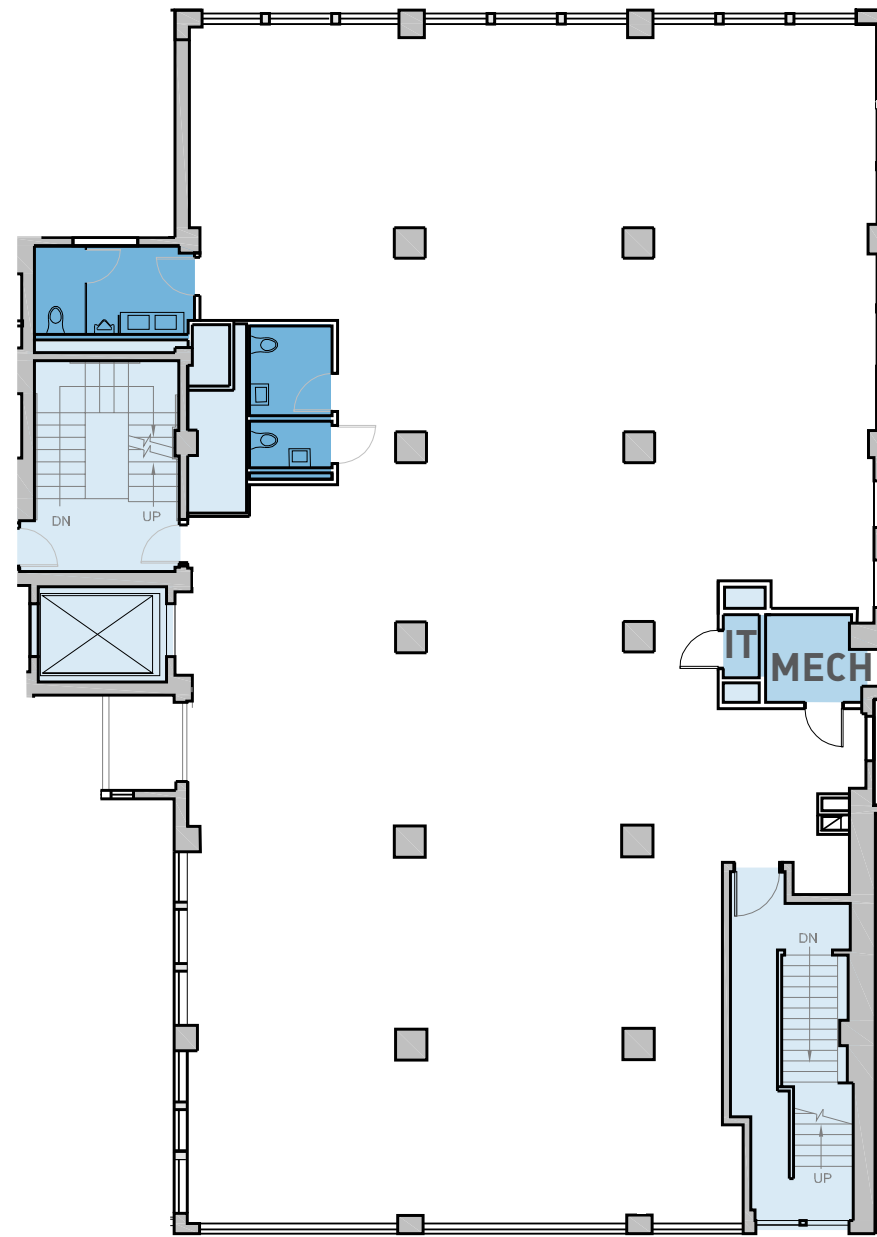


# Building F

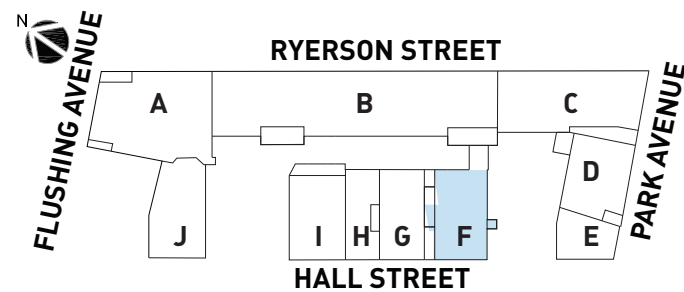
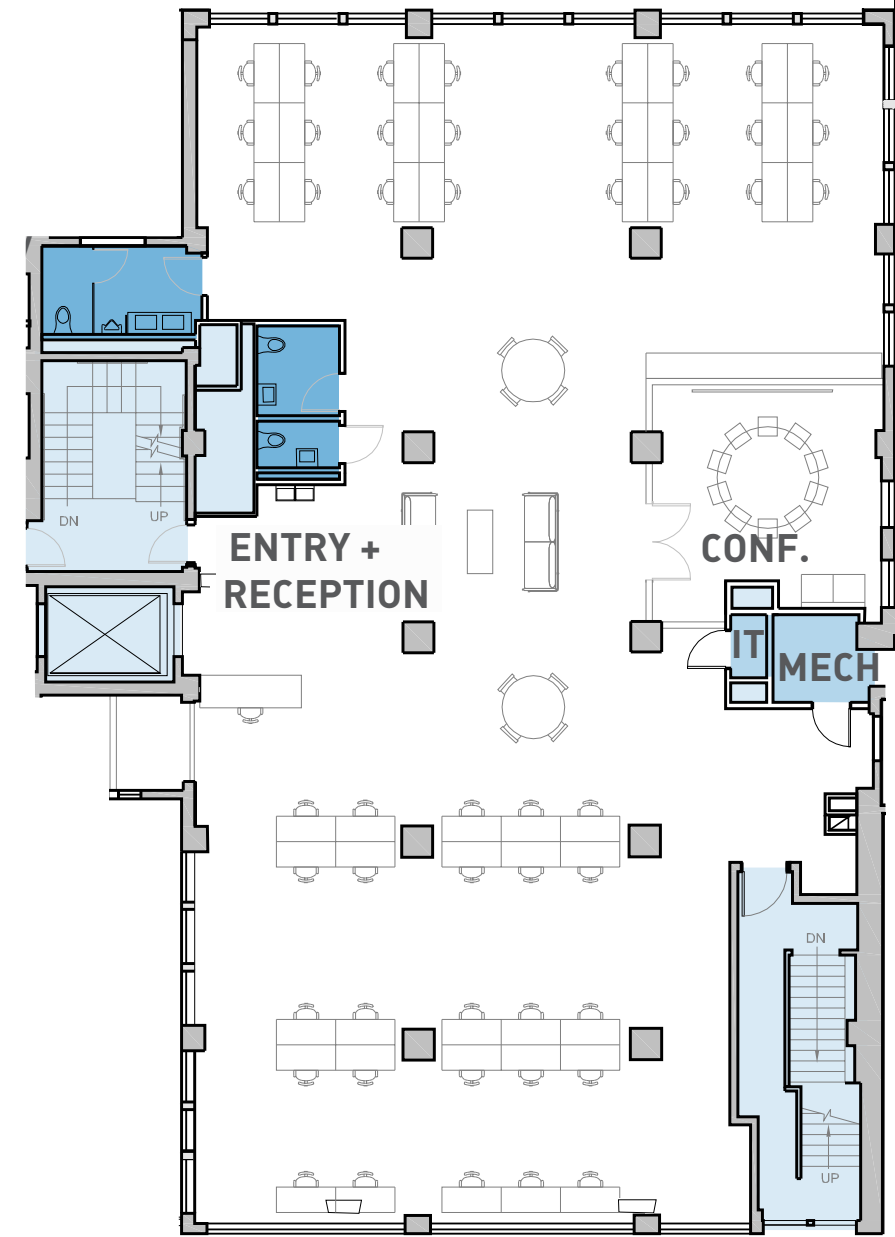
43 Hall Street

FLOOR	SQUARE FEET	CEILING HEIGHT
8	5,235	12'-1"
7	5,081	11'-4"
6	5,230	11'-4"
5	5,302	11'-4"
4	5,302	11'-4"
3	5,324	10'-9"
2	5,175	11'-2"
1	4,883	12'-6"
<b>TOTAL</b>	<b>55,087</b>	

## Base Floorplan



## Sample Test Fit - 48 Desks



6 WC Fixtures / 6 Lavatories  
Provided with Base Delivery