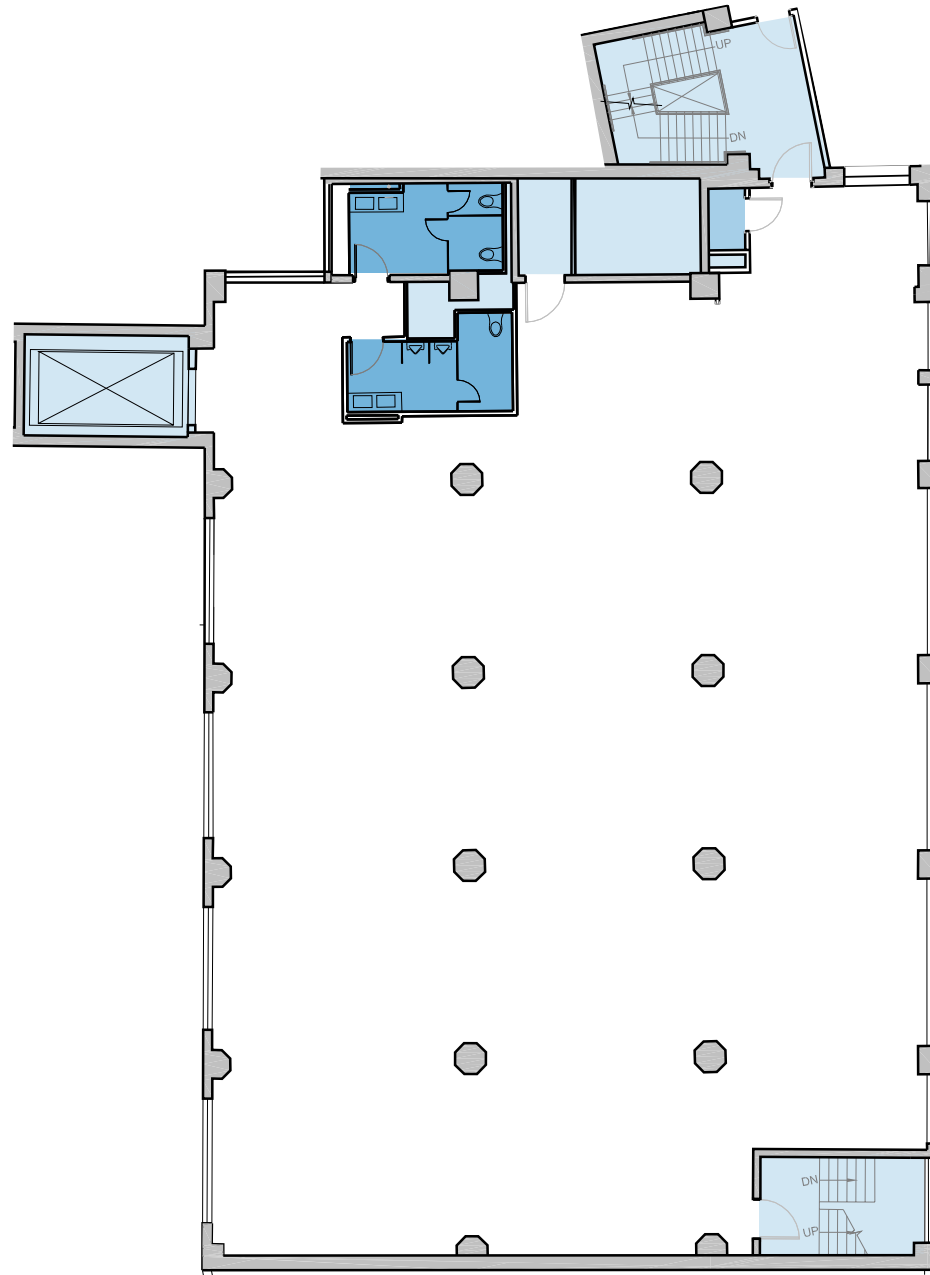


Building D

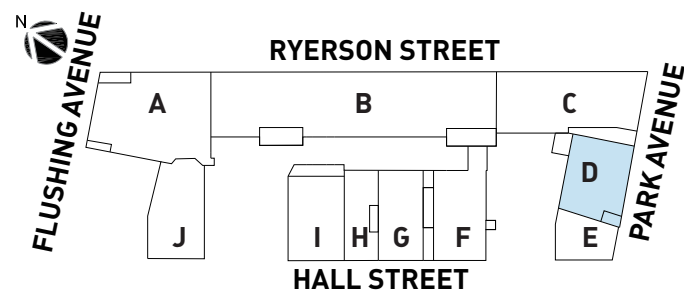
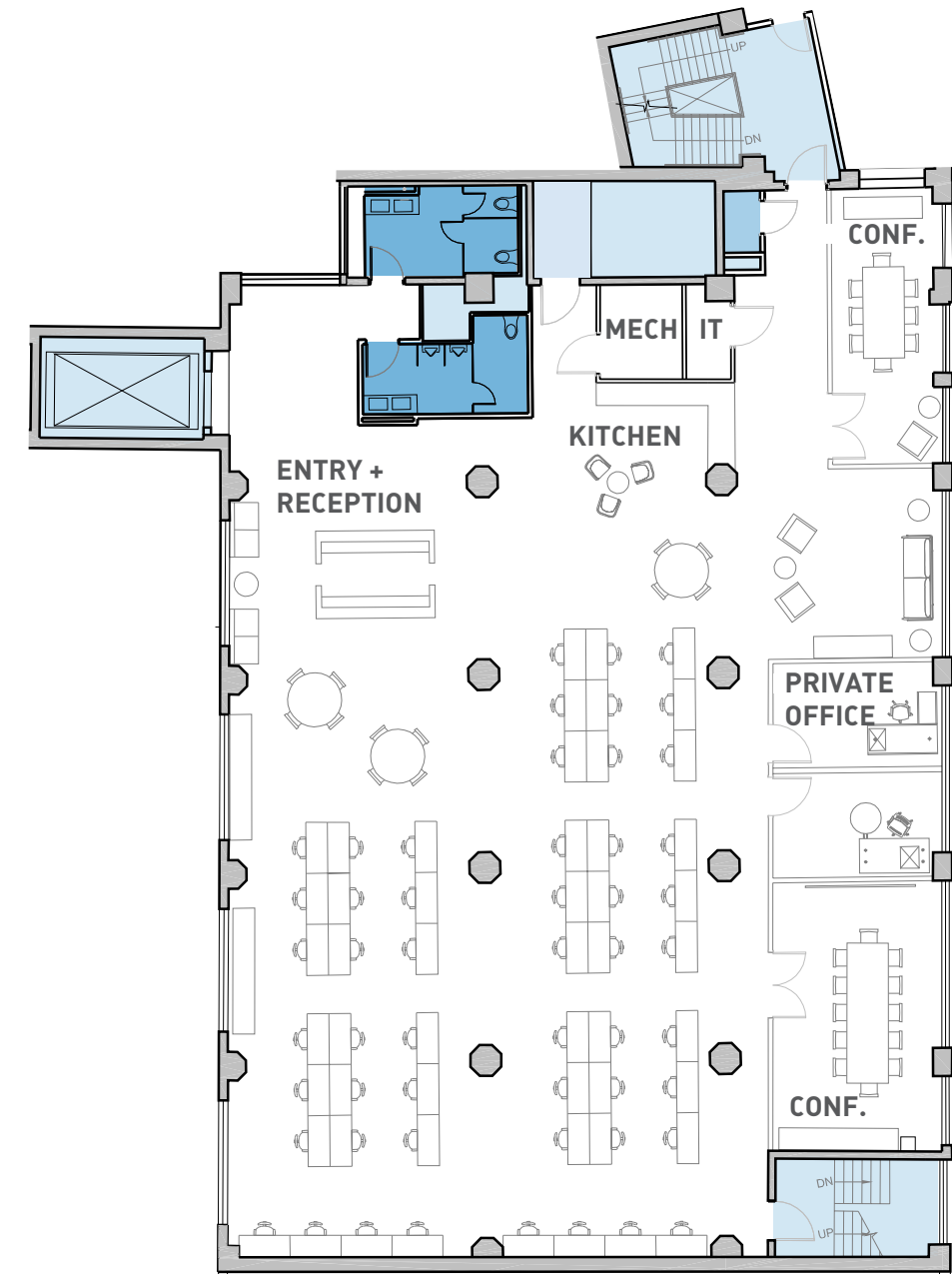
303 Park Ave

FLOOR	SQUARE FEET	CEILING HEIGHT
8	8,704	13'-5"
7	8,684	12'-2"
6	8,674	12'-9"
5	8,866	12'-9"
4	8,860	12'-9"
3	8,866	12'-9"
2	8,862	13'-0"
1	8,675	13'-3"
B	6,028	13'-4"
TOTAL	76,018	

Base Floorplan



Sample Test Fit - 59 Desks



5 WC Fixtures / 4 Lavatories
Provided with Base Delivery