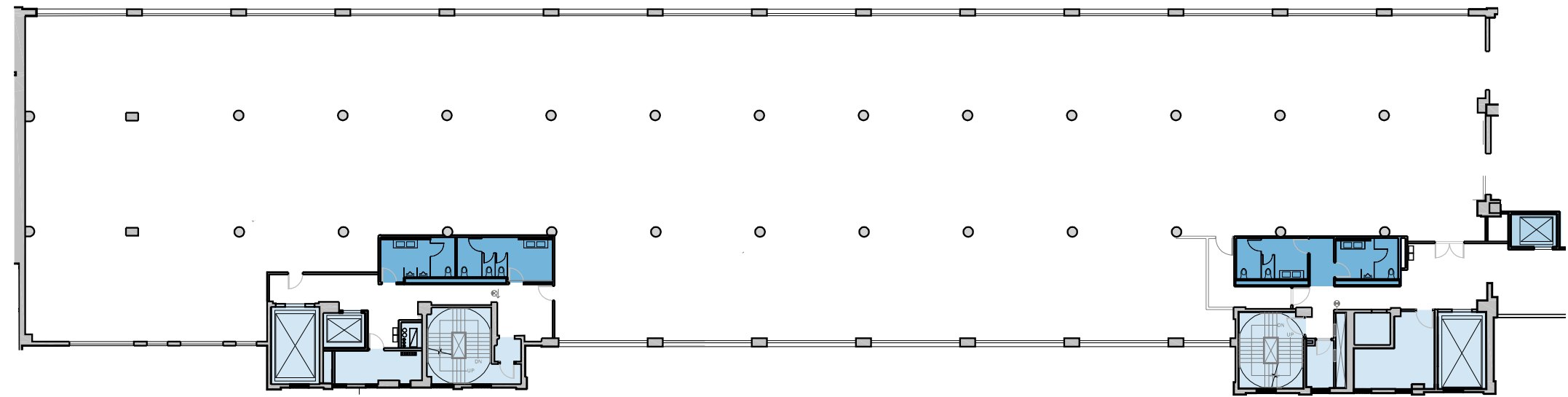


Building B

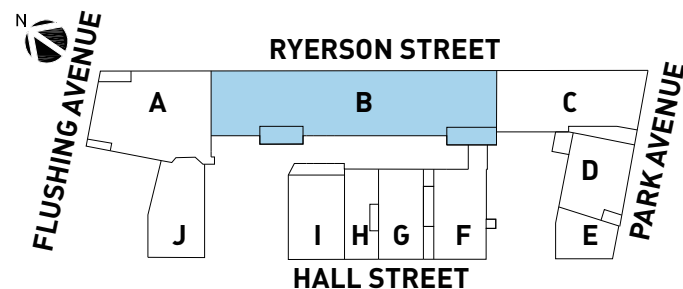
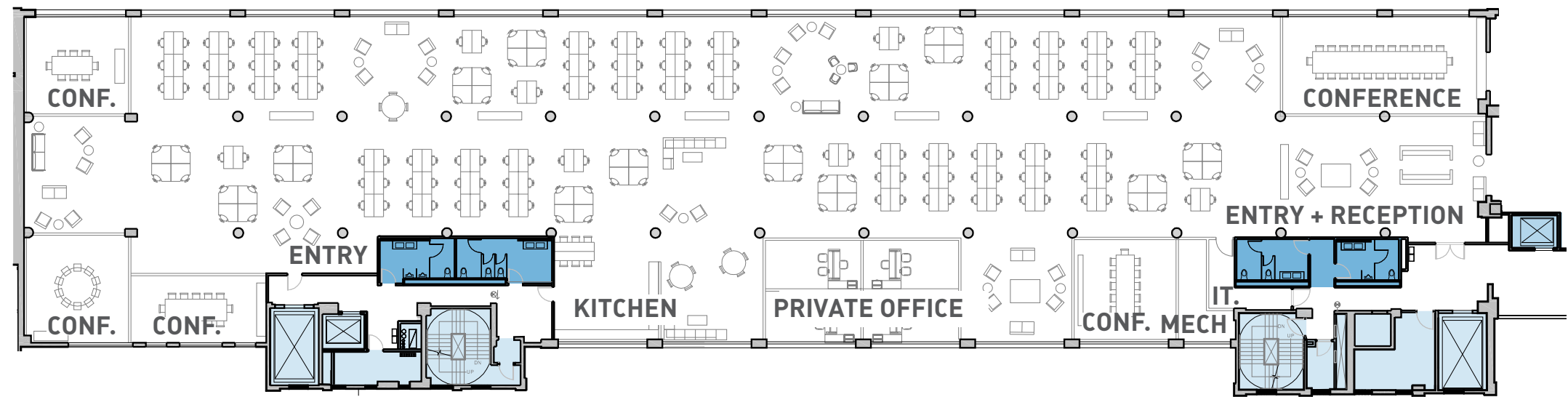
47 Hall Street

FLOOR	SQUARE FEET	CEILING HEIGHT
8	29,216	13'-8"
7	29,223	12'-10"
6	29,200	12'-10"
5	29,207	12'-10"
4	29,140	12'-10"
3	29,242	13'-2"
2	29,189	13'-0"
1	29,142	13'-2"
B	17,662	17'-8"
C	5,574	12'-3"
TOTAL	256,796	

Base Floorplan



Sample Test Fit – 195 Desks. Single Tenant Floor.



10 WC Fixtures / 8 Lavatories
Provided with Base Delivery