

Building H

27 HALL STREET

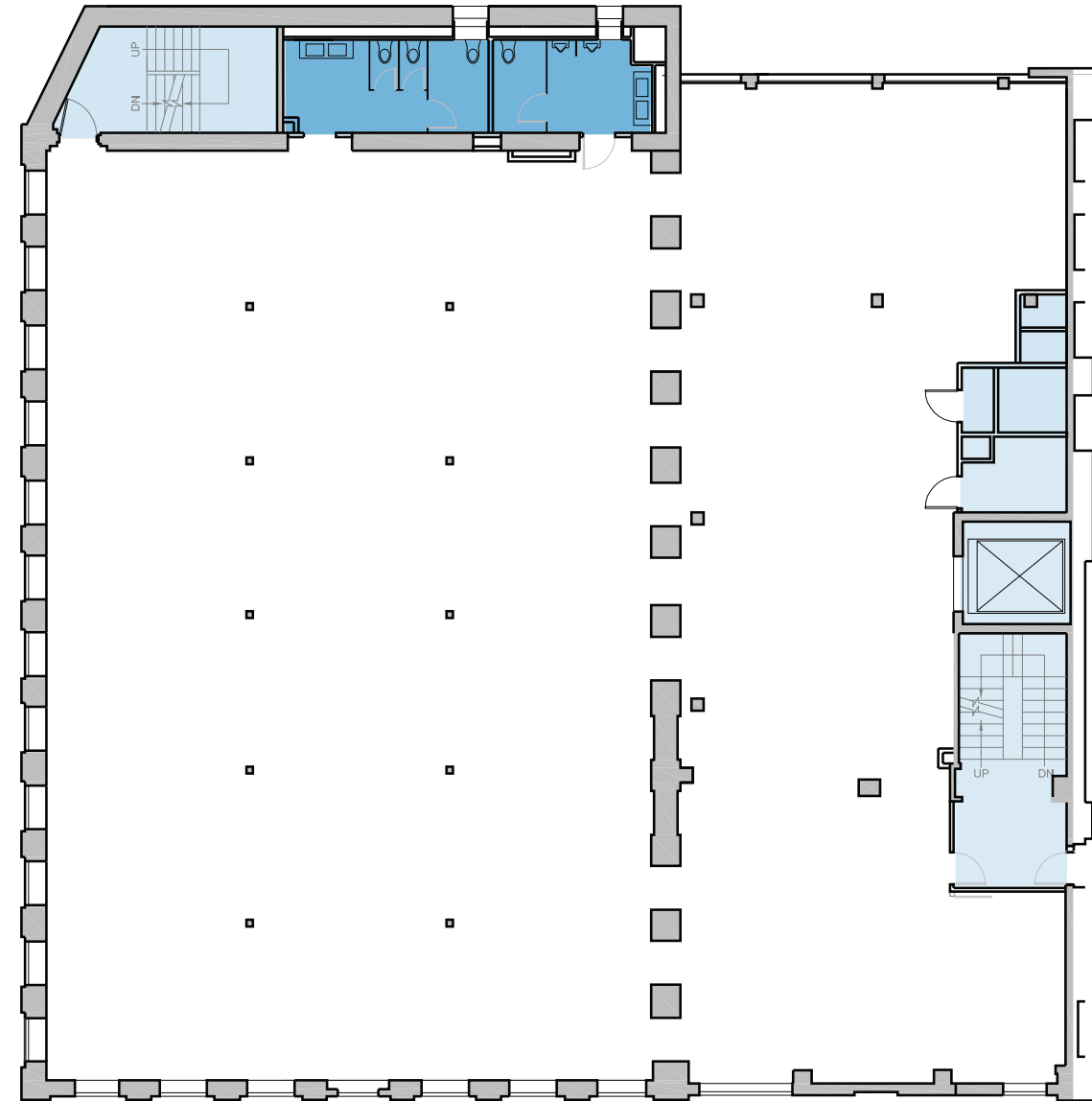
FLOOR	SQUARE FEET	CEILING HEIGHT
B	3,302 SF - RETAIL	12'-5"
1	2,808 SF - RETAIL	12'-3"
2	4,395 SF	11'-5"
3	4,377 SF	10'-10"
4	4,419 SF	11'-6"
5A	2,412 SF - PRE-BUILT	12'-1"
5B	2,410 SF - PRE-BUILT	12'-1"
TOTAL	24,123 SF	

Building I

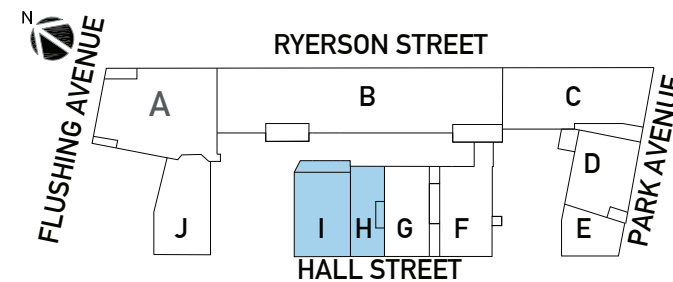
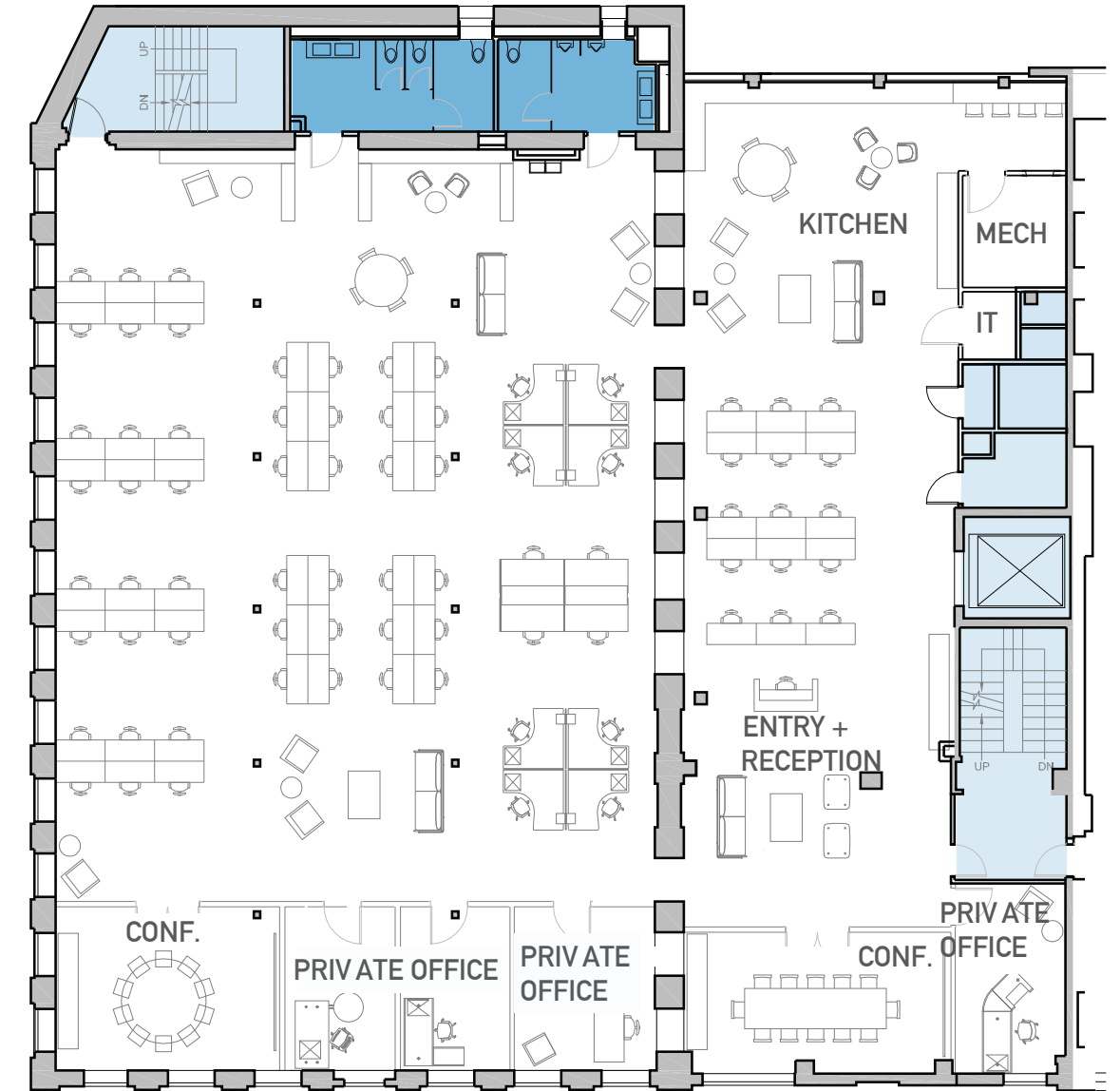
25 HALL STREET

FLOOR	SQUARE FEET	CEILING HEIGHT
B	5,711 SF - CYCLE GEAR	12'-3"
1	5,890 SF - CYCLE GEAR	12'-5"
2	8,065 SF	11'-6"
3	8,065 SF	10'-8"
4	8,076 SF	11'-2"
5C	3,321 SF - PRE-BUILT	12'-11"
5D	4,480 SF - PRE-BUILT	12'-11"
TOTAL	43,608 SF	

Base Floorplan



Sample Test Fit - 84 Desks



6 WC Fixtures / 6 Lavatories
Provided with Base Delivery