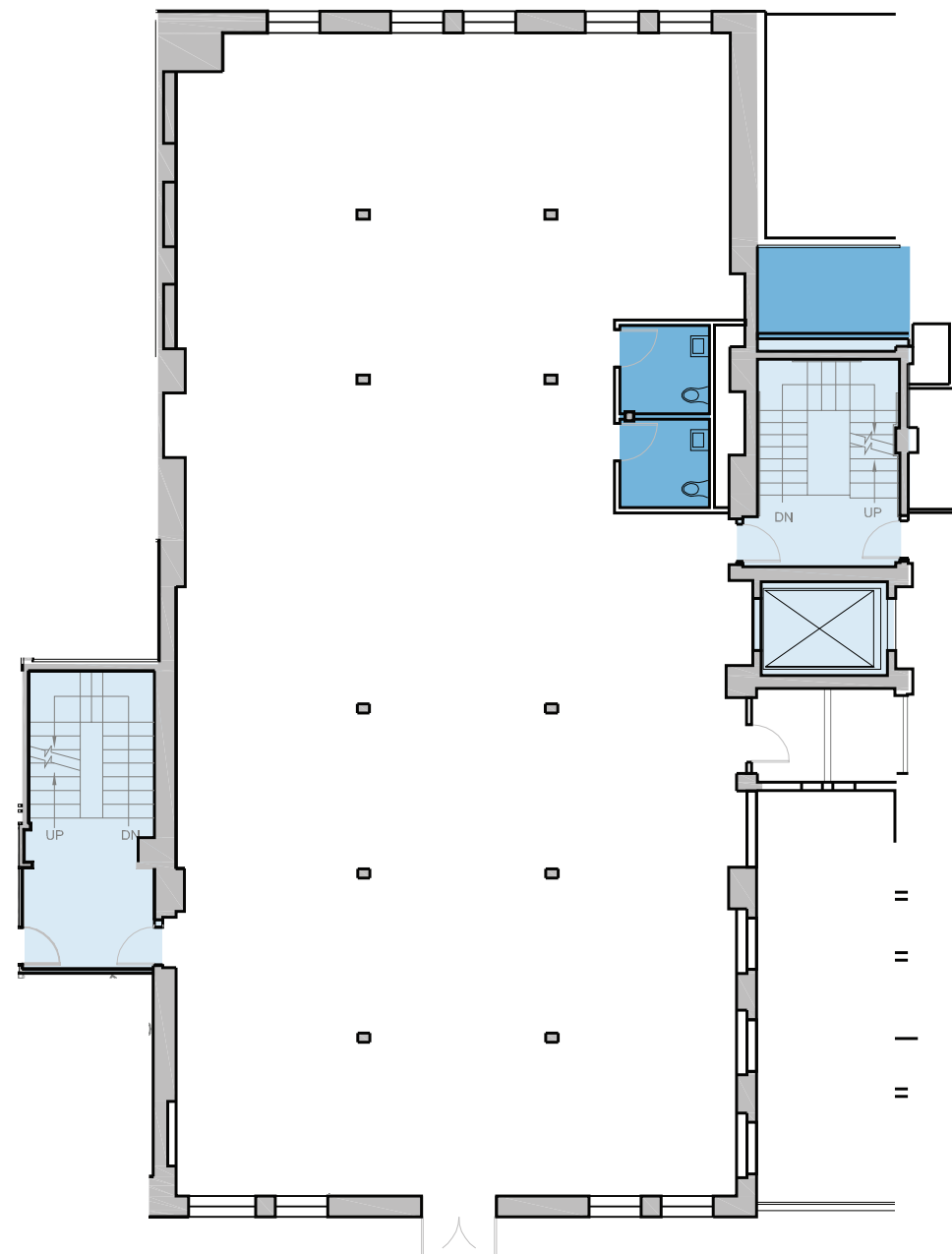


Building G

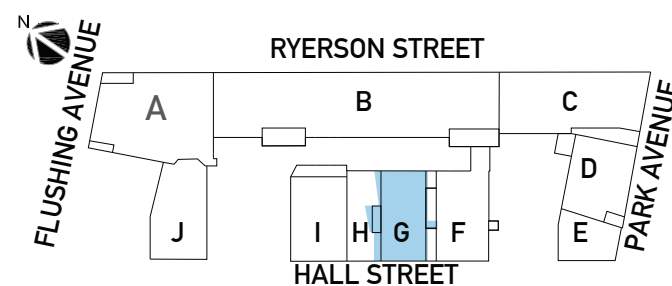
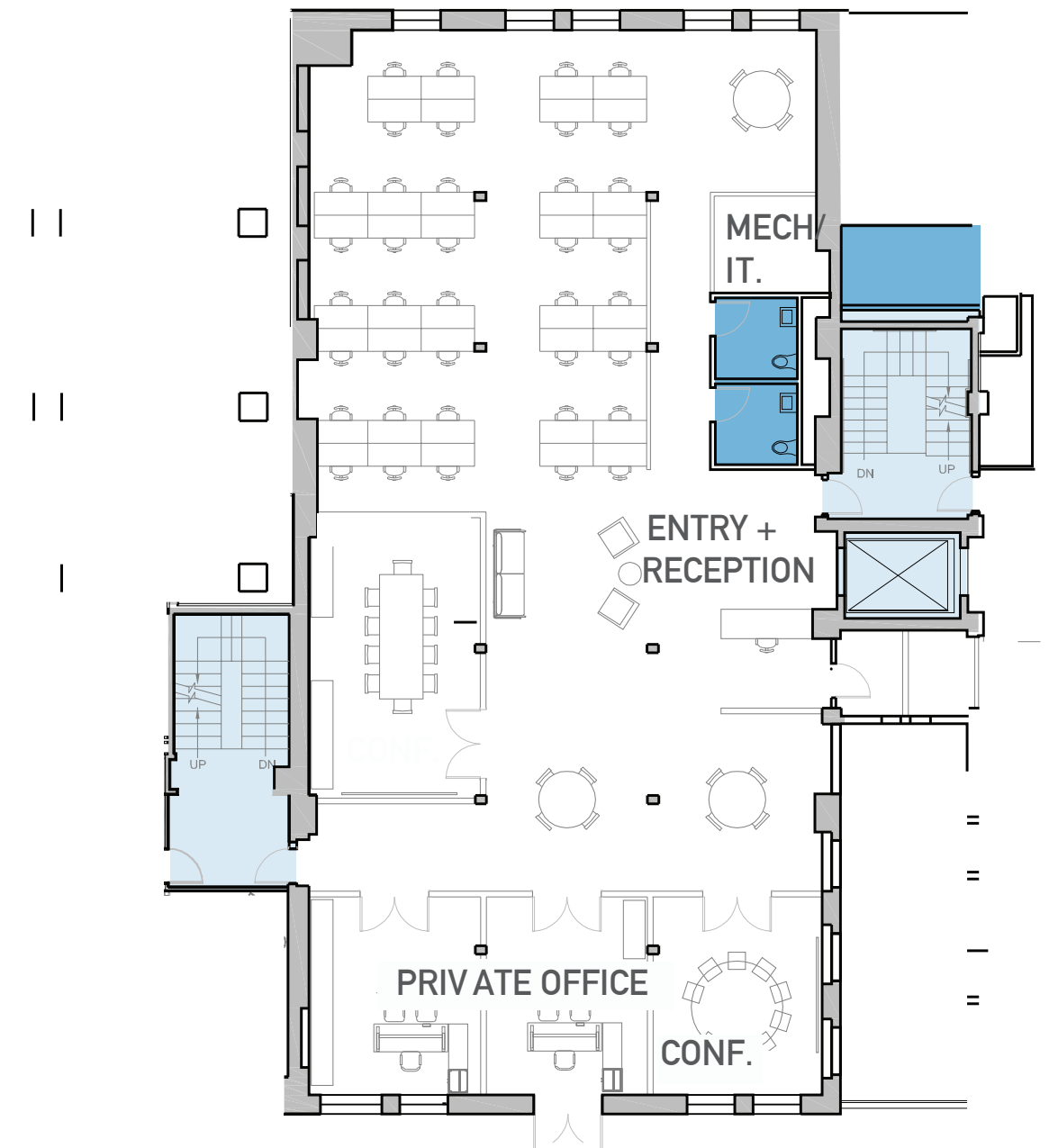
33 HALL STREET

FLOOR	SQUARE FEET	CEILING HEIGHT
B	3,384 SF - RETAIL	13'-3"
1	4,569 SF	13'-0"
2	6,252 SF	12'-9"
3	6,258 SF	12'-9"
TOTAL	20,463 SF	

Base Floorplan



Sample Test Fit - 41 Desks



6 WC Fixtures / 6 Lavatories
Provided with Base Delivery