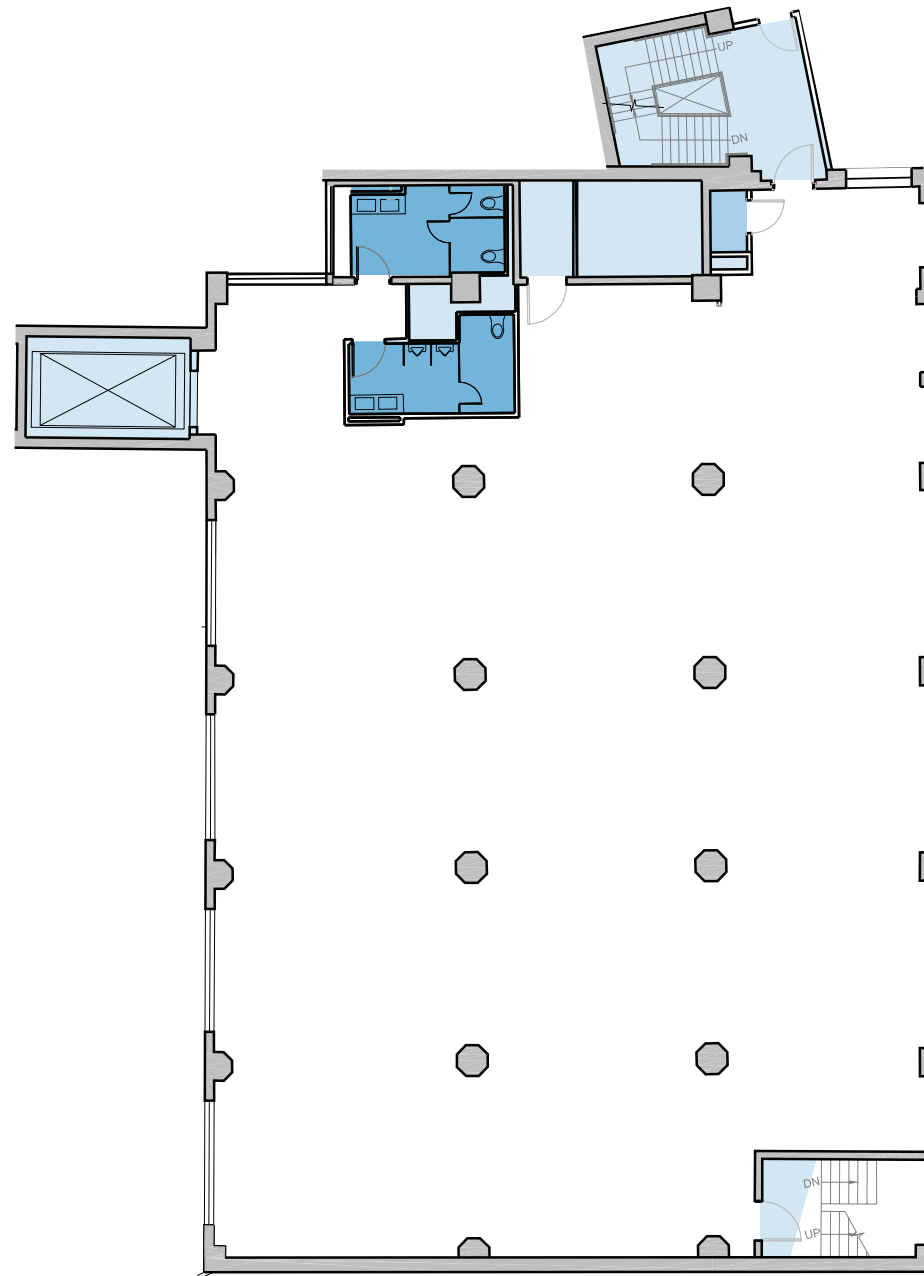


Building D

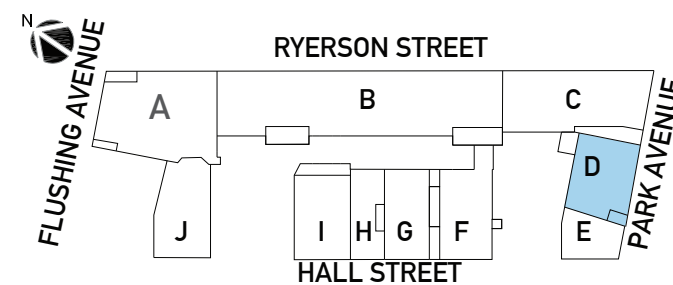
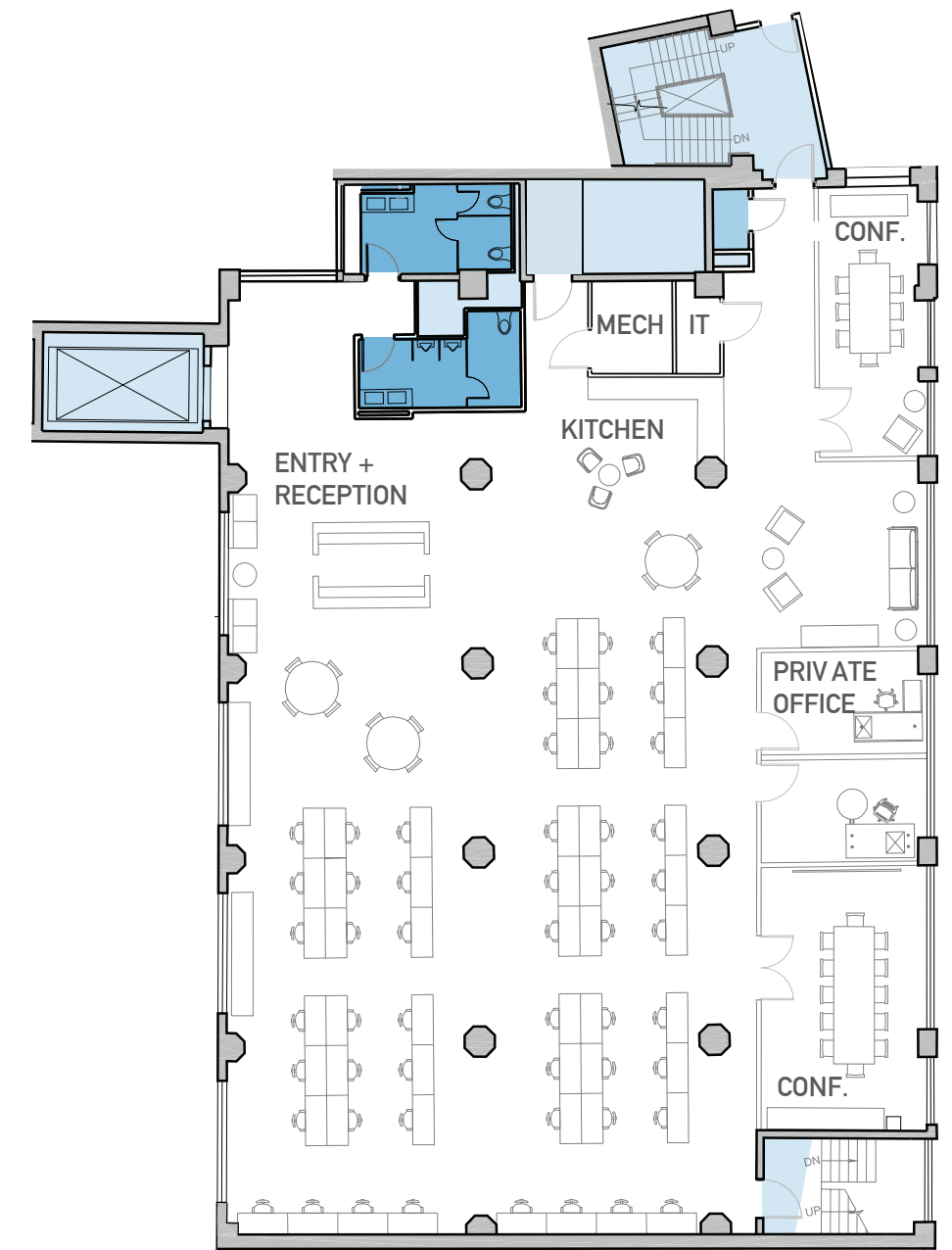
303 PARK AVE

FLOOR	SQUARE FEET	CEILING HEIGHT
B	6,028 SF - RETAIL	13'-4"
1	8,675 SF	13'-3"
2	8,861 SF	13'-0"
3A	2,136 SF - PRE-BUILT	12'-9"
3B	1,638 SF - PRE-BUILT	12'-9"
3C	1,232 SF - PRE-BUILT	12'-9"
3D	2,246 SF - PRE-BUILT	12'-9"
3E	1,614 SF - PRE-BUILT	12'-9"
4	8,861 SF	12'-9"
5	8,666 SF	12'-9"
6	8,673 SF	12'-9"
7	8,684 SF	12'-2"
8	8,705 SF	13'-5"
TOTAL	76,019 SF	

Base Floorplan



Sample Test Fit - 59 Desks



5 WC Fixtures / 4 Lavatories
Provided with Base Delivery